

The background features a dark grey winding road with white dashed lines, curving from the bottom left towards the top right. Four colorful location pins are placed along the road: a large blue one on the left, a small orange one further up, a green one further up, and a large red one at the bottom center. In the top right corner, there are green diagonal lines and faint educational icons like a book, an apple, and a pencil. The title text is in a large, green, sans-serif font.

# Education & Career Guidance (ECG)

PARENT ENGAGEMENT SESSION  
SECONDARY 2

**Ms Sumarni M.N.**

Education and Career Guidance Counsellor

# Education and Career Guidance (ECG) Counsellor



**MS. SUMARNI M.N.**

## EMAIL:

[sumarni\\_mohd\\_nor@schools.gov.sg](mailto:sumarni_mohd_nor@schools.gov.sg)

---

## MY LOCATION:

- Every Tuesday

D'YC Resort @Level 1 (8am -2pm)

Library @ Level 3 (2pm-5.30pm)

- Every Wednesday

D'YC Resort @Level 1 (Full day)



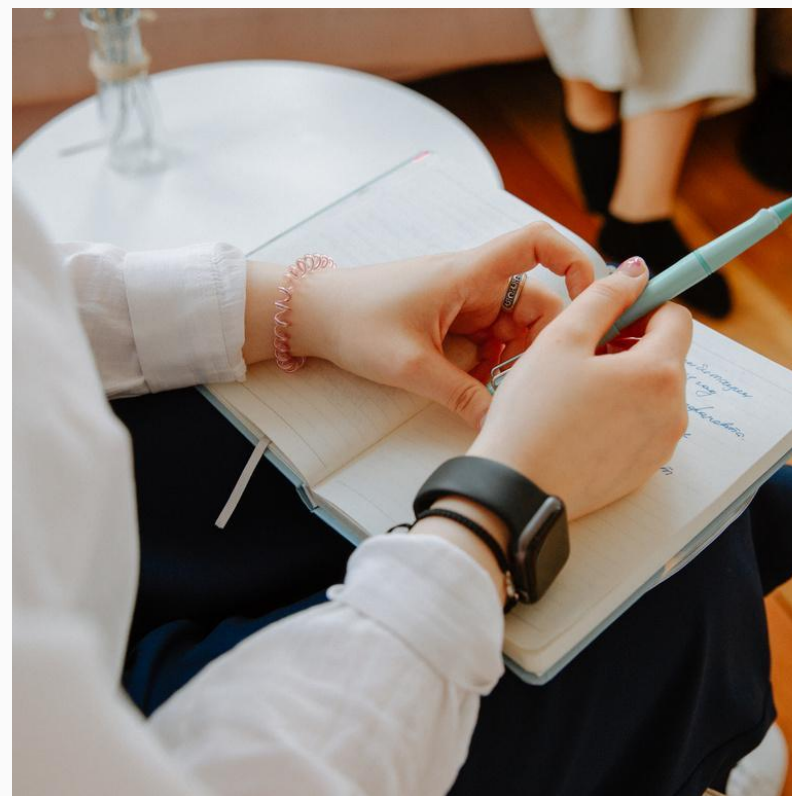
<https://go.gov.sg/meetecg>

# Overview of Sharing

Navigating through the educational journey...

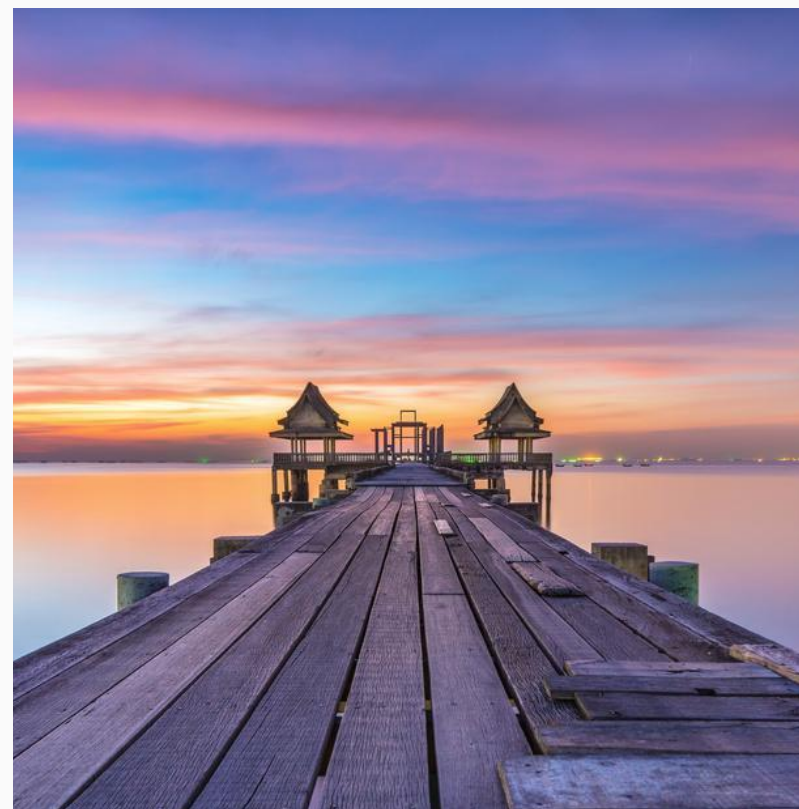
## Introduction to ECG

---



## Changing Education Landscape

---



## Supporting our child's ECG journey

---



# Education and Career Guidance



1

Intro to ECG

2

Changing Education landscape

3

Supporting our child's education journey





# Who is ECG for?

What course  
should I  
choose?

What am I  
good at?

Should I go to a  
Poly, ITE, JC or  
Arts School?



How do I  
make  
decisions?

I'm confused, I  
don't know what  
to do?

What are my  
career interests?

# ECG is about...

**Discovering  
who am I**

**Knowing where do  
I want to go**

**Knowing how to  
get there**

## Who am I?

The more I know about what I value, what I am interested in, and what I am good at, the more likely I will be able to make informed choices in my education and career explorations.



## Where do I want to go?

Many pathways are worth taking, and there are opportunities for continuous learning and recognition.



## How do I get there?

There are no dead ends. I can continue to pursue my aspirations.





A person with long brown hair in a ponytail, wearing an orange jacket and a green backpack, stands on a rocky outcrop looking out over a vast mountain landscape. The mountains are covered in green vegetation and a lake is visible in the distance under a cloudy sky.

# How can ECG help our child?

By having a good understanding of their own **strengths, interests** and **values**, they will be able to make an **informed decision** in deciding their educational pathways.





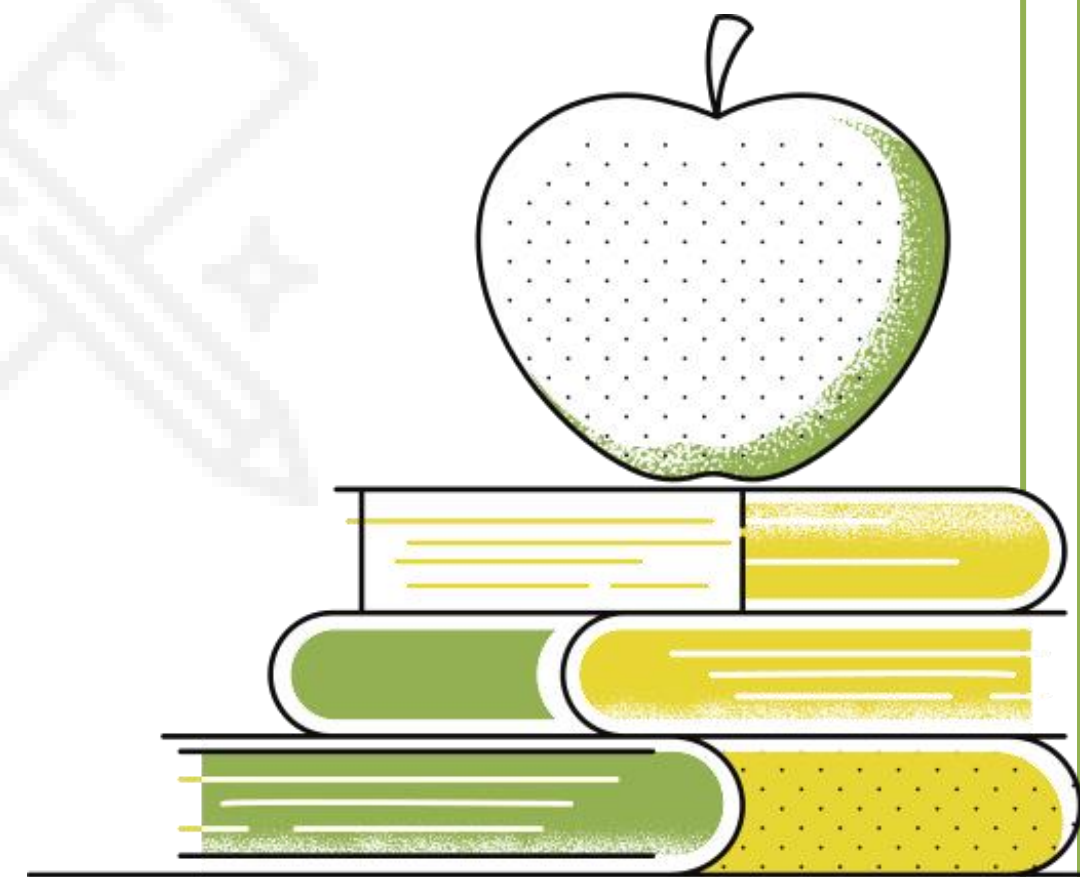


# Education and Career Guidance

---



Intro to ECG



2

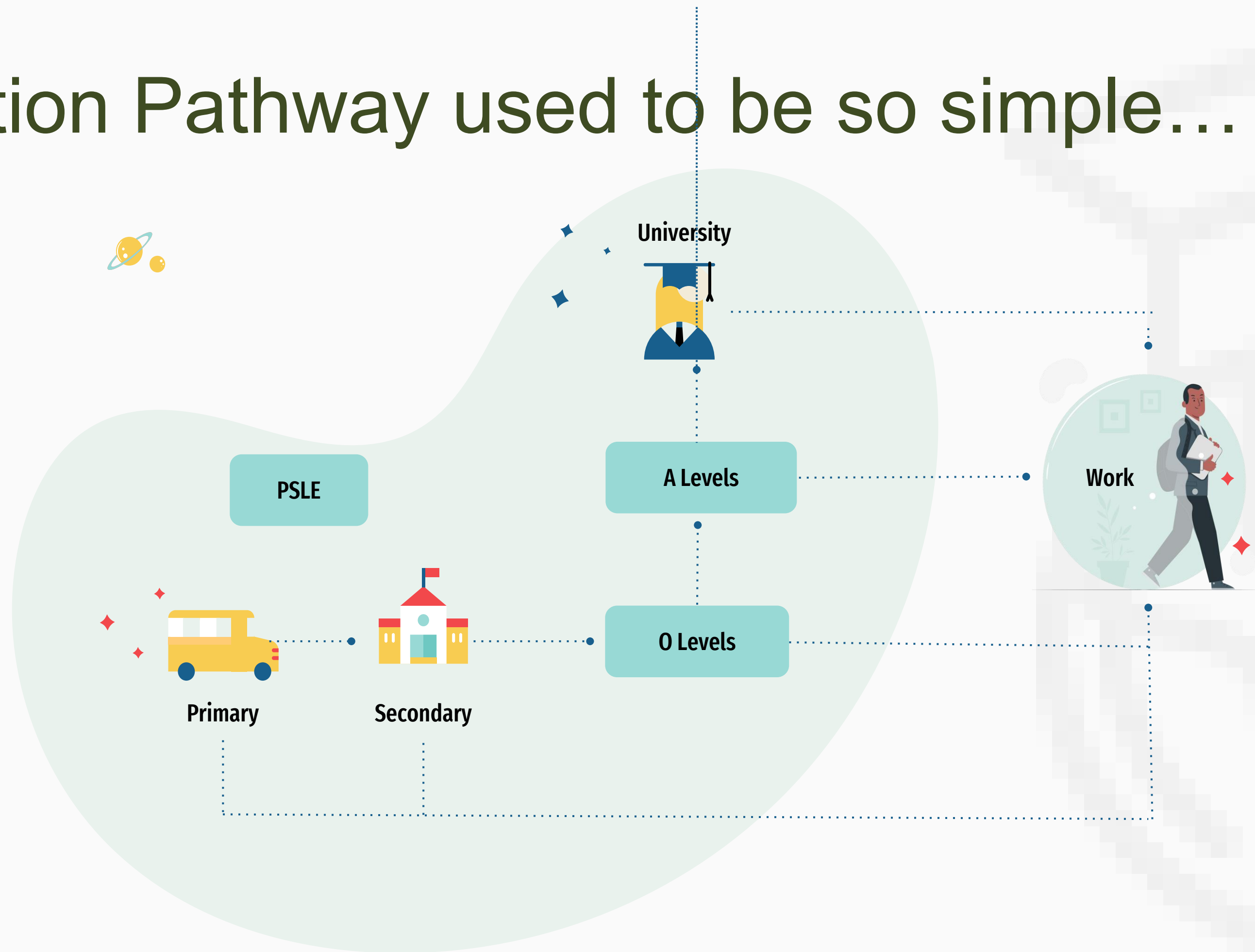
Changing Education landscape

3

Supporting our child's education journey

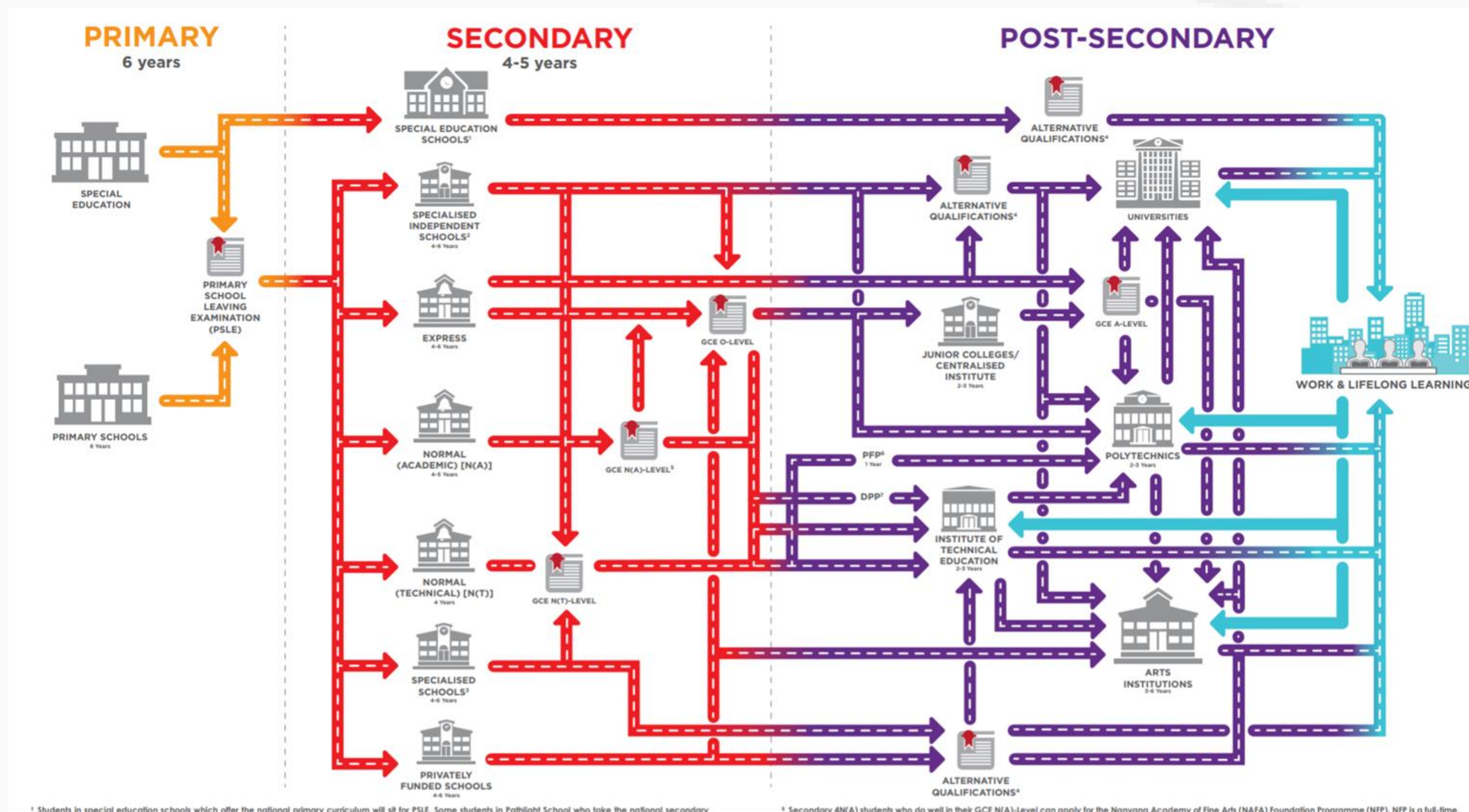


# Education Pathway used to be so simple....

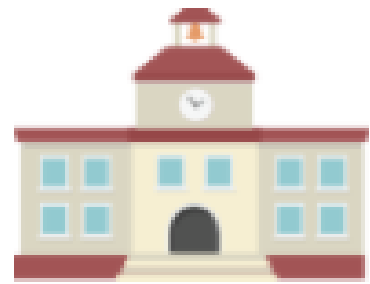


# Changing Education Landscape

## Multiple pathways

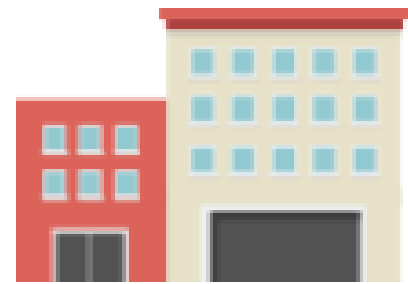


# Overview of Post-Secondary Education Institutions



## Junior Colleges / Centralised Institute

Pre-University  
institutions offering  
academic curriculum-  
2-year A-Level,  
3-year A-Level and  
2-year IB programme.



## Institute of Technical Education

Applied Learning institutions  
offering practice-based  
curriculum with industry  
attachments.



## Polytechnics



## Universities

NUS, NTU,  
SMU, SUTD, SIT  
and SUSS



## Arts Institutions

Offers Practice-based  
curriculum. Diploma  
and Degree  
programmes in the  
arts, music, theatre  
etc.

*For more on post-secondary education institutions, visit :*  
***<https://www.moe.gov.sg/post-secondary>***



# Course Clusters in Applied Learning Institutions (Polys and ITE)

## *Information & Digital Technologies*



## *Media & Design*



## *Applied Sciences*



## *Business & Management*



## *Built Environment*



## *Engineering*



## *Maritime Studies*



## *Humanities*

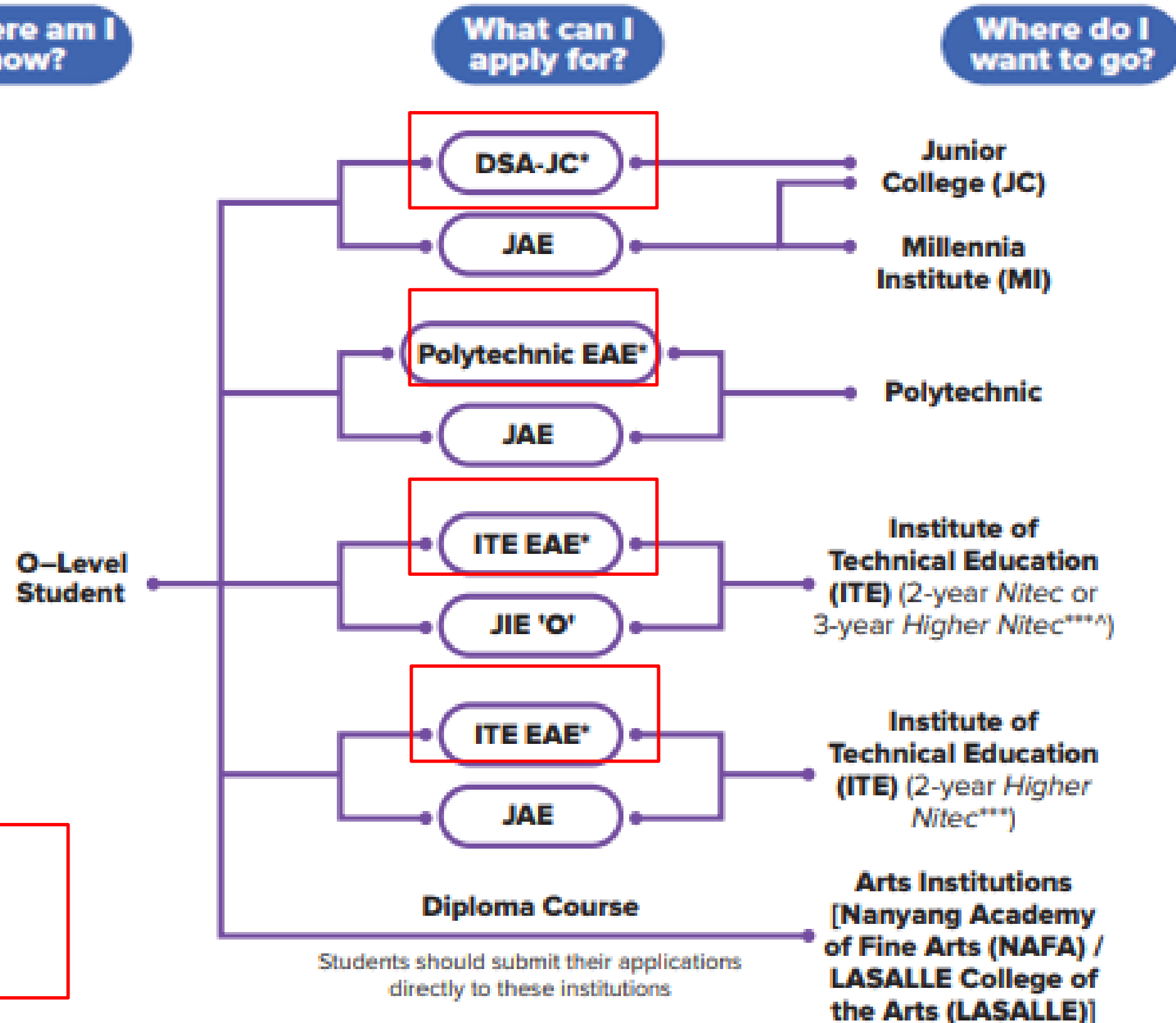


## *Health Sciences*



*Specialisations  
your child can  
explore based on  
your child's  
strengths and  
interests.*

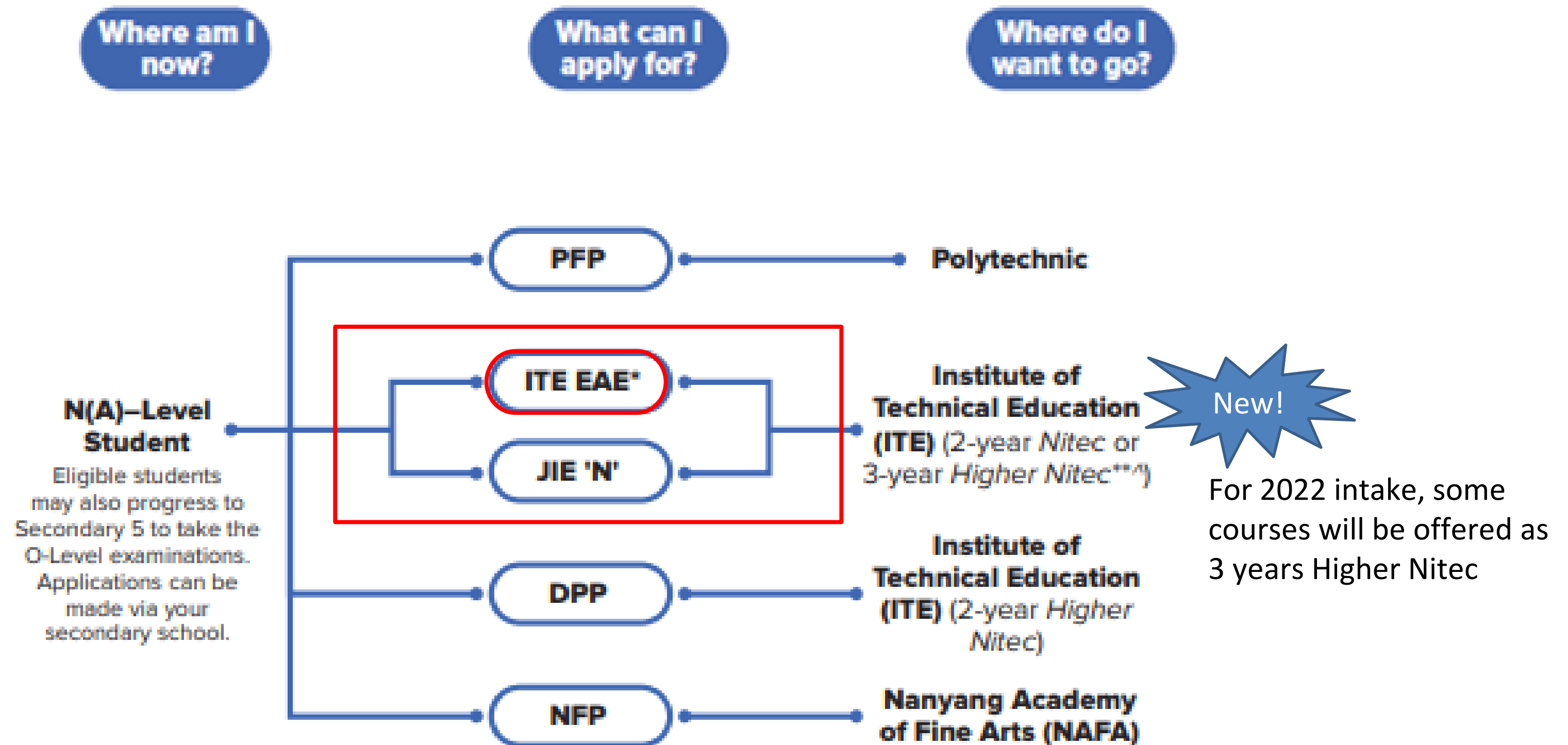
# Post-Sec Pathways for Students taking GCE O-Level Exam



Note:  
Admissions **before** O Levels  
EAE: Early Admission Exercise  
DSA: Direct School Admission

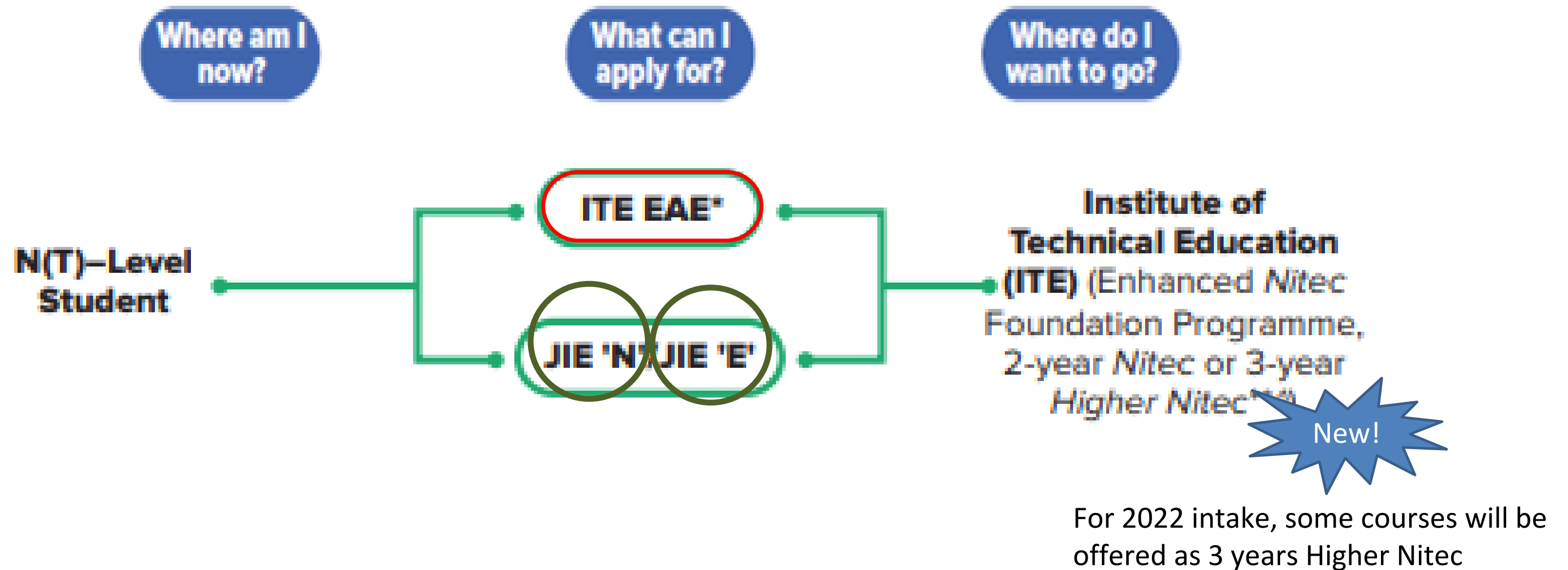
JAE: Joint Admission Exercise

# What's Next after GCE **NA** Levels?





# What's Next after GCE **NT** Levels?



# Aptitude-based Admission Exercises to Polys, ITE and JCs



Based on interests, strengths and talent areas. Assessed through interviews and portfolio etc.

1

**EAE ITE**

## **Early Admissions Exercise**

An aptitude-based admissions exercise that allows students to apply and receive conditional offers for admission to the polytechnic/ITE based on their course-specific aptitudes and interests, **prior to receiving their final grades**

2

**EAE Poly**

3

**DSA JC**

## **Direct School Admissions Exercise**

Allows students to apply to a DSA school based on their talent in sports, CCAs and specific academic areas. Students will need to be committed to their DSA category and chosen school for the duration of the programme.

# What are their strengths, interests and aptitude?

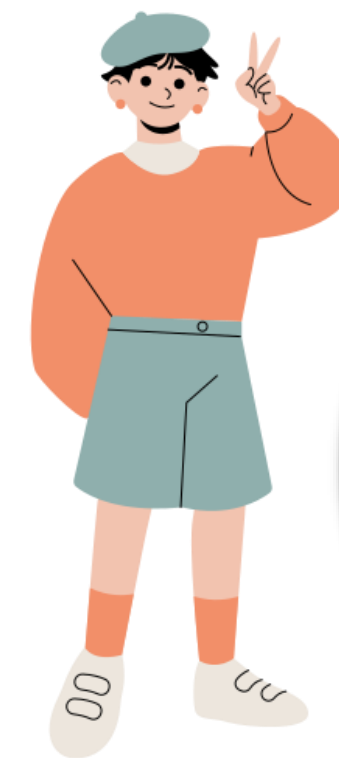
What is their favourite or best subject?

What suits them?  
What is their learning style like?

Know their education pathways

Consider also the entry requirements

Consider subject relevance to aspiration



Who am I?

Where do I want to go?

How do I get there?

***Making Informed Decisions***



# Education and Career Guidance



## Intro to ECG

2

## Changing Education landscape

3

## Supporting our child's education journey



# Observe your child

Help them identify their...

Values, Interests, Personality and Skills (VIPS)

1

Inclinations, Interests, Abilities,  
Hobbies

*What do they enjoy doing?  
What are they curious about?*

2

Subjects, CCAs,  
School Experiences

*What did they find meaningful?  
What did they do well in?  
What do they wish to learn more about?*

3

Character, Values and  
Personality

*What do they value?  
What is important to them?*





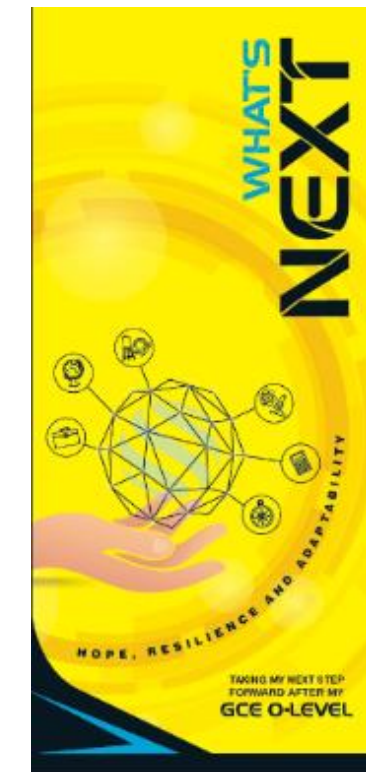
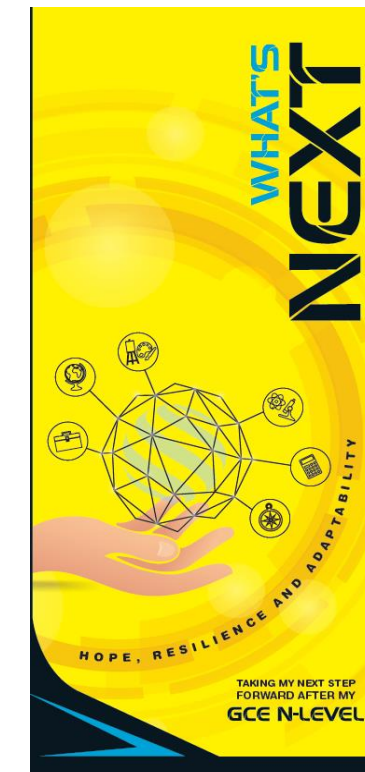
# MySkillsFuture Portal

## Resources for students



Help students plan their next step forward after their secondary education.

<https://go.gov.sg/mysfsec>



This ECG pamphlet helps to scaffold the decision-making process for students at key education stages.

<https://go.gov.sg/whats-next>

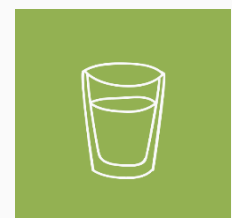


# Communicate with your child

---



**Set aside time** and **space** where you can **speak, listen** and **understand** your children's thoughts and feelings.



# Guide and Support our Children

---

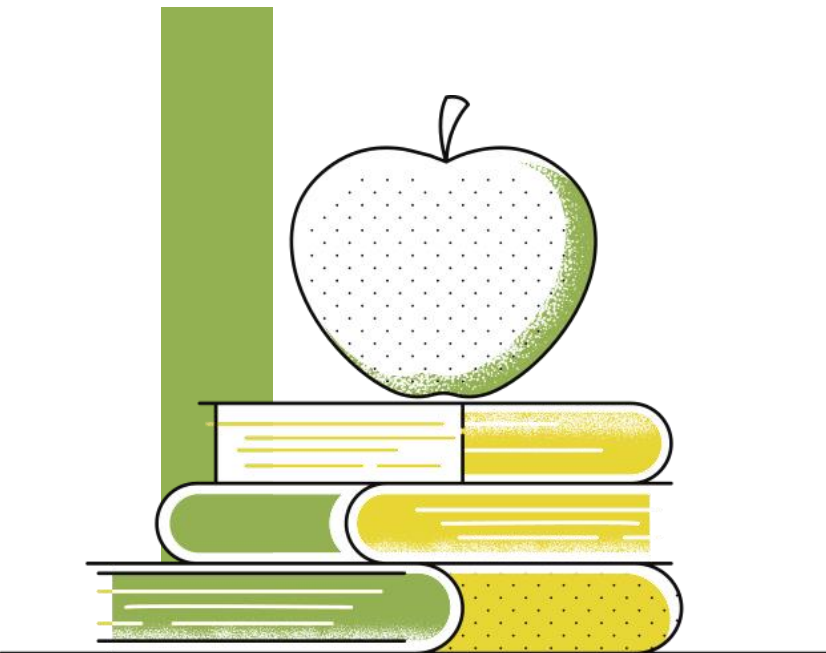


- As children grow up, our parents' roles change from **'doing'** to **'partnering'**.
- Help your child identify their **interests, abilities** and inclinations.
- Help your child know their own **strengths** as well as **areas that need growth**.
- Understand that there are **different education and career pathways** your child can explore.
- Be **open** and **listen** to our children.



# Useful Resources for Parents

For more on supporting your child in ECG,  
read the ECG handbook for parents







Contains useful tips on how to have ECG  
conversations with your child.






An Education & Career Guidance Handbook  
for Parents



# Useful Resources

Website	URL	
Journeying with our Children. Supporting their Aspirations	<a href="https://go.gov.sg/ecg-parent-guide">go.gov.sg/ecg-parent-guide</a>	 <small><a href="https://go.gov.sg/ecgparentguide">https://go.gov.sg/ecgparentguide</a></small>
Overview of Post-Secondary Education Institutions (PSEIs)	<a href="https://go.gov.sg/overview-pseis">go.gov.sg/overview-pseis</a>	
The Next Step Forward (e-book)	<a href="https://go.gov.sg/next-step-forward">go.gov.sg/next-step-forward</a>	 <small><a href="https://go.gov.sg/next-step-forward">https://go.gov.sg/next-step-forward</a></small>
MySkillsFuture for Secondary School	<a href="https://go.gov.sg/mysfsec">go.gov.sg/mysfsec</a>	 <small><a href="https://go.gov.sg/mysfsec">https://go.gov.sg/mysfsec</a></small>

# Useful Resources

Website	URL	
MOE Course Finder	<a href="https://go.gov.sg/coursefinder">go.gov.sg/coursefinder</a>	
What's Next (After 'N' / 'O' / 'A' Level)	<a href="https://go.gov.sg/whats-next">go.gov.sg/whats-next</a>	
Schoolbag Website	<a href="https://go.gov.sg/schoolbag">go.gov.sg/schoolbag</a>	

# 3 Key ECG Questions

**WHO AM I?**

**WHERE DO I  
WANT TO GO?**

**HOW DO I GET  
THERE?**

*Keep an Open Mind*  
*Keep Learning*  
*Keep Discovering*



# Chat with your ECG Counsellor

**MS. SUMARNI M.N**

**Email:**

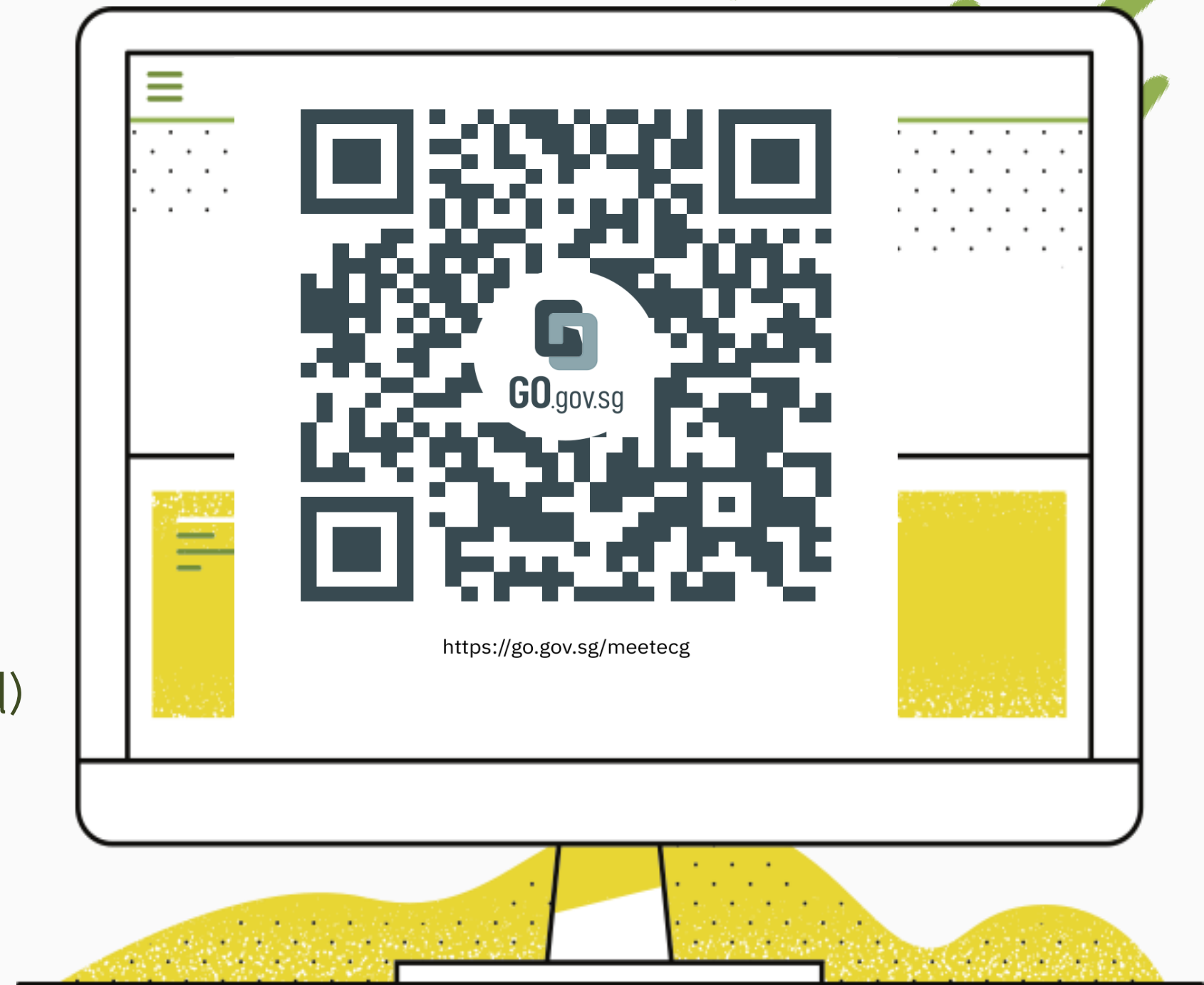
sumarni\_mohd\_nor@schools.gov.sg

**Location:**


D'YC Resort @ Level 1/ Library (Every Tue & Wed)

**Book an ECG session:**

<https://go.gov.sg/meetecg>



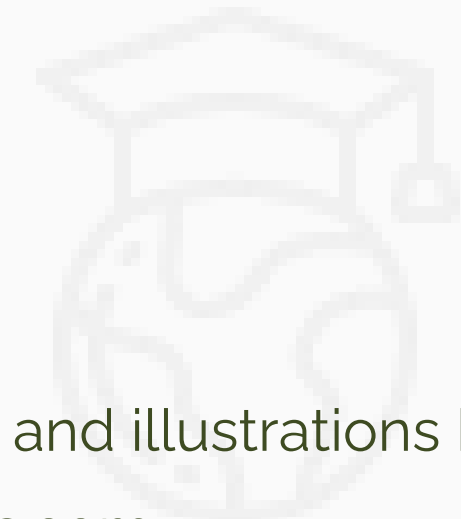





# Thank You

---

# Parents



## Credits:

Presentation template and illustrations by Canva

Photographs by Pexels.com

